

Species Name	Common Name	Girth (cm)	General Specification	Quantity
Acer griseum	Paper-bark Maple	14-16	Extra Heavy Standard: 5 brks: 3x: RB: Clear Stem min. 200cm	1
Acer rufrinerve 'Erythrocladum'	grey snake-bark maple 'Erythrocladum'	12-14	Heavy Standard: 5 brks: 3x: RB: Clear Stem min. 200cm	1
Acer tataricum	Tatarian Maple	12-14	Heavy Standard: 5 brks: 3x: RB: Clear Stem min. 200cm	1
Betula albosinensis 'Fascination'	Chinese Red Birch 'Fascination'	12-14	Heavy Standard: 5 brks: 3x: RB: Clear Stem min. 200cm	3
Liquidambar styraciflua	Sweet Gum	12-14	Heavy Standard: 5 brks: 3x: RB: Clear Stem 175-200cm	4

- Proposed Tree Locations BNG Coordinates
- E:645730.4612 N:260028.2551
 - E:645732.9719 N:260031.3104
 - E:645737.0625 N:260033.6214
 - E:645743.3621 N:260032.2288
 - E:645745.7137 N:260030.7068
 - E:645747.1148 N:260029.8672
 - E:645744.5972 N:260017.4024
 - E:645740.7638 N:260015.482
 - E:645731.861 N:260019.0721
 - E:645730.0337 N:260021.7882

Species Name	Common Name	General Specification	Quantity	Spacing between centres (m)
Allium 'Globemaster'	Ornamental Onion 'Globemaster'	Full Pot: min. 3 sprouts: C: Grade 4 / 5	1423	0.1
Colchicum speciosum	Giant Meadow Saffron	Grade 14 / 15	1699	0.1
Galanthus elwesii	Giant Snowdrop	Grade 4 / 5	596	0.1
Muscari armeniacum	Grape Hyacinth	Grade 7 / 8	770	0.1
Narcissus 'Bridal Crown'	Double Daffodil	Grade 12 / 14	1423	0.1
Nerine bowdenii	Bowden Lily	Grade 12 / 14	506	0.1

Species Name	Common Name	Pot Size	General Specification	Quantity	Spacing between centres (m)
Ajuga reptans	Bugle	2L	Full Pot: Sept to April planting: British Native-origin: Container grown	371	0.3
Mentha requienii	Corsican mint	1L	Full Pot: Container Grown	355	0.3
Pachysandra terminalis	Japanese Spurge	5L	Several Shoots: 7 brks: C	481	0.3
Thymus serpyllum	Creeping Thyme	1L	Full Pot: Container Grown	589	0.3
Trifolium repens	White Clover	1L	Full Pot: Container Grown	339	0.3
Vinca minor	Lesser Periwinkle	5L	Several Shoots: 5 brks: C	622	0.3

Species Name	Common Name	Pot Size	General Specification	Quantity	Spacing between centres (m)
Acanthus mollis	Bear's Breeches	2L	Full Pot: Container Grown	35	0.8
Alchemilla mollis	Lady's Mantle	2L	Full Pot: Container Grown	134	0.5
Choisya ternata	Mexican Orange Blossom	10L	Bushy: 5 brks: C	11	1.5
Cotoneaster frigidus 'Saint Monica'	Cotoneaster	10-15L	Branched: 6 brks: C	8	1.5
Euonymus europaeus 'Red Cascade'	Spindle Tree 'Red Cascade'	10-15L	Branched: 6 brks: C	9	1.5
Fatsia japonica 'Variegata'	Variegated Japanese Aralia	10L	Branched: 3 brks: C	13	1.5
Geranium sanguineum 'Elsbeth'	Bloody cranesbill	2L	Full Pot: Container Grown	43	0.5
Geranium x oxonianum 'Wargrave Pink'	French Cranesbill 'Wargrave Pink'	5L	Full Pot: Container Grown	30	0.6
Hebe 'Blue Haze'	Shrubby Veronica 'Blue Haze'	3L	Bushy: 5 brks: Container Grown	14	0.8
Hebe 'Red Edge'	Shrubby Veronica 'Red Edge'	5L	Bushy: 5 brks: Container Grown	13	0.8
Hebe 'Tricolour'	Shrubby Veronica 'Tricolour'	5L	Bushy: 5 brks: Container Grown	5	1
Helleborus x hybridus	Hybrid Lenten Rose	3L	Full Pot: Container Grown	52	0.5
Helleborus Penny's Pink	Hellebore, Winter rose	3L	Full Pot: Container Grown	52	0.5
Lavandula angustifolia	True Lavender	5L	Bushy: 5 brks: Container Grown	35	1
Mahonia x media 'Winter Sun'	Mahonia 'Winter Sun'	10L	Bushy: 3 brks: C	7	1.5
Pulmonaria angustifolia 'Munstead Blue'	Narrow-leaved Lungwort 'Munstead Blue'	3L	Full Pot: Container Grown	197	0.4
Sarcococca humilis	Dwarf Sweet Box	3L	Bushy: 6 brks: C	46	0.7
Sedum spectabile	Ice plant	2L	Full Pot: Container Grown	23	0.8
Stachys byzantina	Lamb's Ears	3L	Full Pot: Container Grown	86	0.5
Viburnum tinus 'Lucidum'	French Laurestinus	10L	Bushy: 5 brks: Container Grown	7	1.5

KEY:

- Proposed Roundabout Kerb Line
- Proposed Decorative Permeable Resin Bound Gravel (Maintenance Strip)
- Proposed Bulb Planting
- Proposed Groundcover
- Proposed Trees
- Proposed Shrub / Herbaceous Planting
- Proposed Contours
- Proposed Root Barrier To direct roots away from underground utilities

PLANTING NOTES

TREES

- Plant material to conform to the National Plant Specification. Plant handling and planting operations to be in accordance with HTA 'Handling and Establishing Landscape Plants', Parts 1-11.
- In accordance with BS 3882:2015, topsoil depths should not exceed 300mm to top of planting areas. Remainder of rooting zones to be filled with suitably loosened subsoil from an approved source. Soil pH 7.0. Topsoil to be free from excessive amount of weed seeds, roots of perennial weeds, subsoil and extraneous matter. Do not handle during or after heavy rainfall or when it is wetter than the plastic limit as defined by BS 3882, Annex N2.
- Excavated topsoil to be free of perennial weeds, weed seeds and contamination and store pickled to remove any stones larger than 50mm prior to re-use. Excavated topsoil to be amended and/or screened if necessary to achieve this specification.
- Soil conditioner: Sanitized and stabilised compost to BS1 PAS 100. Apply 25mm depth even coverage and incorporate into topsoil during cultivation operations, to a minimum depth of 150mm. Compost to be Compost Association certified, or conforming to the specification from an approved supplier.
- Mulch planting beds with matured coniferous bark, with an even particle size between 5-35mm, to 75mm minimum depth over weed-free soil after completion of planting and watering.
- Fork over the bottom of feathered tree pits to a depth of 200mm and leave slightly domed to assist drainage.
- Tree pit design in accordance with BS 8545:2014. Pit diameter 1000mm diameter x 700mm depth. Trees to be supported by 2no. 75mm diameter tree stakes out approximately 600mm above ground level and 2no. adjustable tree ties. All trees to be fitted with aeration/watering pipe and inlet. Backfill tree pits with excavated topsoil/compost.
- Planting season: Late October to late March.

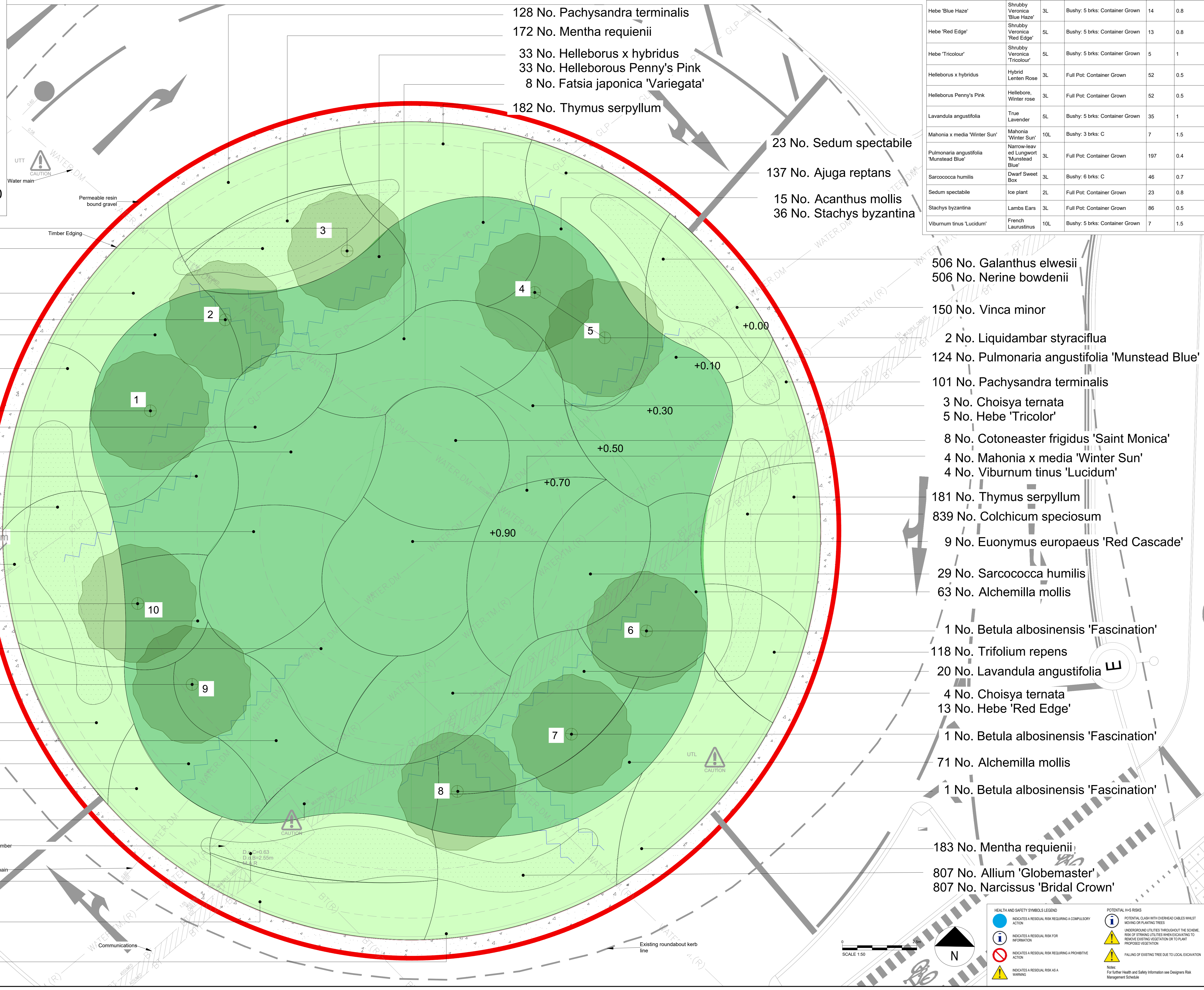
SHRUB PLANTING

- All Planting Works shall be carried out in accordance with BS 4043, BS 4428 and BS 5837.
- Container-grown plants may be planted at any time of year during favourable weather and soil conditions.
- Cultivate the ground immediately prior to planting, to a minimum depth of 300 mm removing all live injurious weed roots and growth to a tip off site.
- Sufficient soil shall be excavated from the bed. The plant shall be set in the center of the plant position, showing its best side to the front. Finely broken back-fill material shall then be packed around the roots. The plants shall be gently shaken to allow fine soil to surround the roots. As soil is returned it shall be lightly consolidated and firmly heeled around the root-collar. Immediately after planting the soil surface shall be evenly graded. If required, the soil shall then be watered sufficiently.
- Ensure the site is clean and remove any litter / arising's off site after planting completion.

BULBS

- Bulbs shall comply with BS 2936 - Part 9.
- All bulbs must be commercially grown in the UK, not collected from the wild.
- The number of bulbs per unit area shall be as described in the planting schedule.
- Bulbs shall be planted at the depth stated by supplier.

- 1 No. Acer rufrinerve
- 616 No. Allium 'Globemaster'
- 616 No. Narcissus 'Bridal Crown'
- 132 No. Ajuga reptans
- 1 No. Acer griseum
- 20 No. Acanthus mollis
- 50 No. Stachys byzantina
- 142 No. Vinca minor
- 1 No. Acer tataricum
- 17 No. Sarcococca humilis
- 3 No. Mahonia x media 'Winter Sun'
- 3 No. Viburnum tinus 'Lucidum'
- 16 No. Geranium x oxonianum 'Wargrave Pink'
- 22 No. Geranium sanguineum 'Elsbeth'
- 770 No. Colchicum speciosum
- 770 No. Muscari armeniacum
- 4 No. Choisya ternata
- 14 No. Hebe 'Blue Haze'
- 226 No. Thymus serpyllum
- 1 No. Liquidambar styraciflua
- 19 No. Helleborus x hybridus
- 19 No. Helleborus Penny's Pink
- 5 No. Fatsia japonica 'Variegata'
- 1 No. Liquidambar styraciflua
- 114 No. Pachysandra terminalis
- 15 No. Lavandula angustifolia
- 73 No. Pulmonaria angustifolia 'Munstead Blue'
- 102 No. Ajuga reptans
- 14 No. Geranium x oxonianum 'Wargrave Pink'
- 21 No. Geranium sanguineum 'Elsbeth'
- 158 No. Vinca minor
- 138 No. Pachysandra terminalis
- 221 No. Trifolium repens



WSP

62-64 Hills Road, Cambridge, CB2 1LA, UK
T: +44 (0) 1223 558 055 F: +44 (0) 1223 558 051
wsp.com

CLIENT: GREATER CAMBRIDGE PARTNERSHIP

PROJECT: MILTON ROAD DETAILED DESIGN

TITLE: ELIZABETH WAY ROUNDABOUT LANDSCAPE GENERAL ARRANGEMENT

SCALE AS SHOWN

PROJECT NO: 70056482

DRAWING NO: MLT-WSP-00-XX-DR-LA-003601

DATE: November 22

REV: C06

© WSP UK Ltd